

# ARCHITECTURE IRELAND

Timberyard by O'Donnell + Tuomey Architects  
New Housing and Thomond Park  
Toxic Loans and NAMA  
2009 Irish Architecture Awards  
Interview with Kim Nielsen 3XN

July/August 2009 - €10 (inc VAT)

247

The Journal of the Royal Institute  
of the Architects of Ireland

RIAI





# EMERGING ARCHITECTURE

## EXTENSION TO ELLENVALE

**ARCHITECTS**  
Catriona Duggan & Achim Gottstein

**CLIENT** - Private

**STRUCTURAL ENGINEERS** - Brunner Consulting Engineers

**MAIN CONTRACTOR** - Newray Construction Ltd.

**PHOTOGRAPHY** - Paul Tierney

**Project size** - 53m<sup>2</sup>  
**Value** - 46.7m  
**Location** - Damolly Road, Co Down

### REPORT

The farmhouse is situated on a large rural site in County Down surrounded by mature gardens to the front and side. Built in the late 1820s, the main house was originally designed with a two-storey return that accommodated servant spaces and bedrooms. By the 1960s, the house had fallen into a state of disrepair and, in attempt to reduce the overall size, the two-storey return was mostly demolished, leaving behind a single storey external garage used as storage space. The plan of the main house was then re-configured to accommodate a small, north-facing kitchen and entrance porch-cum-utility room. In making these modifications, the circulation was altered so that access to the kitchen from the entrance hall was via the living room.

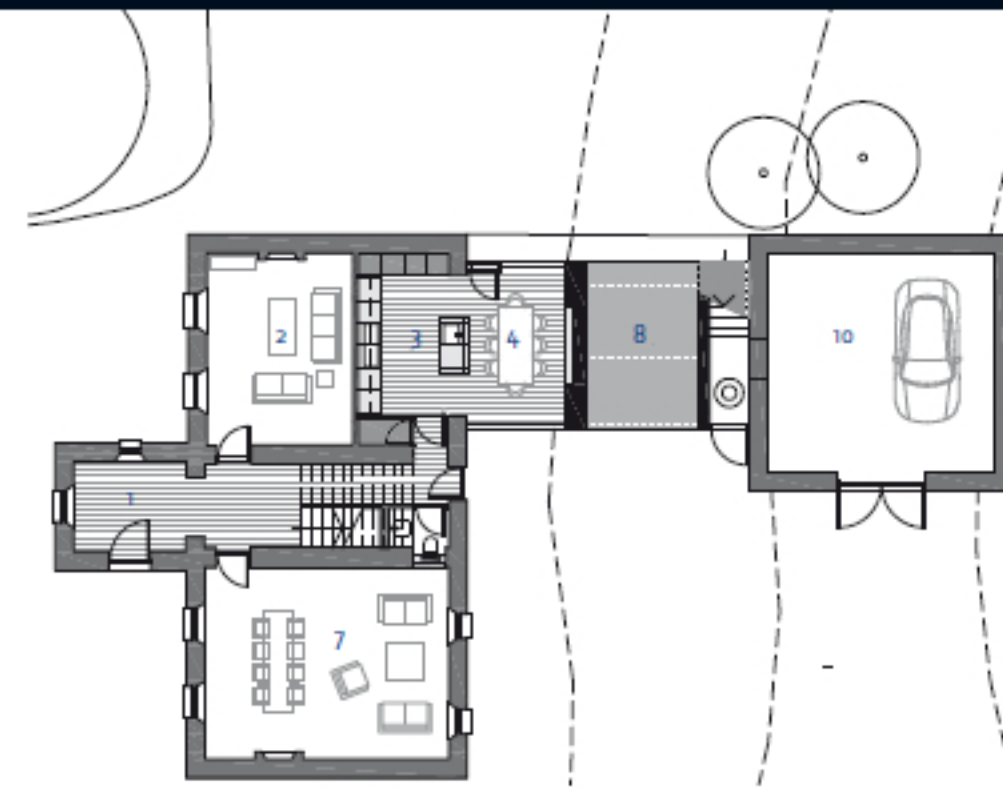
In 2006, the new owners of the house wished to create a small kitchen extension that would engage with the garden and surrounding landscape, provide a downstairs WC and create a loft space in the garage with external access. The design intention was to re-establish the connection between the main house and the somewhat 'left-over' garage. A sculptural form was created that would 'fuse' together the two buildings and accommodate the programmatic requirements of the brief, re-orientating the kitchen space in an east-west direction. The form is expressed as a pure element made of white brick that is molded to create the kitchen extension, a new boiler house, external terrace and access stair to the loft. The modesty of the intervention is

reinforced by the use of a singular material – the white brick, being suitable for use both internally and externally to form the walls, terraces and stairs. The solidity and robustness of the original stone walls are echoed in the walls of the extension and the services and drainage, together with the kitchen storage cupboards are concealed within the mass of the walls. Inside, the utility room has been relocated to beside the kitchen in order to rationalise the circulation and the new WC tucked under the stairs behind a timber-panelled wall.

The project was Highly Commended in the 2009 Irish Architecture Awards.

**Ground floor plan**

- 1 Study
- 2 Kitchen
- 3 Dining
- 4 Terrace
- 5 Stairs
- 6 Loft (storage)
- 7 Garage



**Ground floor plan**

- 1 Entrance
- 2 Study
- 3 Kitchen
- 4 Dining
- 5 Boiler
- 6 WC
- 7 Living
- 8 Terrace
- 9 Access stair to loft
- 10 Garage

1/2. The new sculptural form - realised in white brick - fuses house and garage together  
3. Services and kitchen are concealed within the mass of the walls  
4. White brick was used also internally to form the walls

