

Bath & Spa

Sibylle Kramer

BRAUN

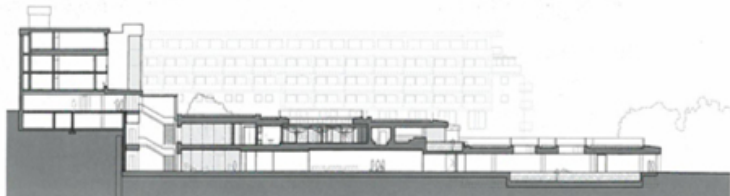


↑ | Exterior view, spa building in context
 ↓ | Section
 → | Exterior view, vitality pool

Espa at the Europe Hotel

Fossa, Killarney

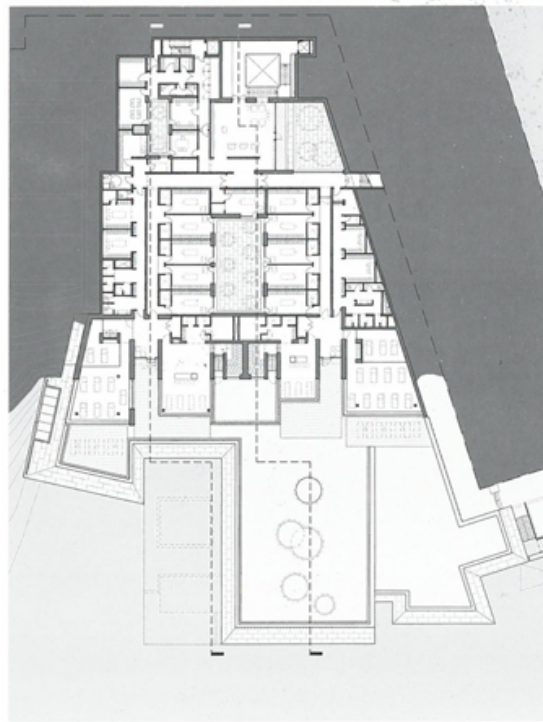
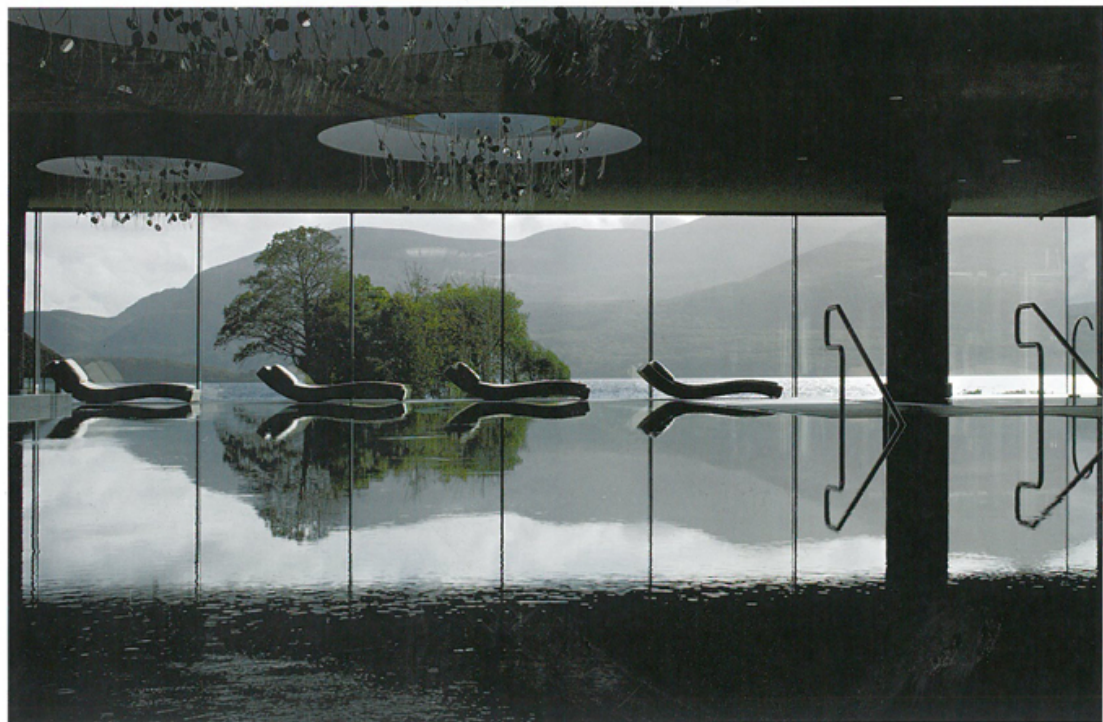
Hotel Europe is set in parkland with mountains forming the backdrop across the lake. The nearby "Black Valley" and "Gap of Dunloe" define the local landscape with big boulders emerging from the hills. Built 1962, the hotel is U-shaped and faces the lake. The brief was to add a 4,500 m² spa whilst maintaining the view of the lake from the hotel. The concept was to carve the building out of the hill, creating a series of stone "boulders" that emerge from the site stretch to the lake, echoing the surrounding imagery and valleys. The "boulders" emerge from the site to create a series of indoor and outdoor "rooms" within the garden. Internally, the spa constitutes a sanctuary within the hill, a contrast of dark and light, density and void. Courtyards are "scooped" out – bringing natural light deep into the building.



PROJECT FACTS

Address: Fossa, Killarney, Co. Kerry, Ireland. Client: the Europe Hotel & Resort. Completion: 2008.
 Gross floor area: 4,800 m². Interior Designers: Hirsch Bedner Associate. Lighting Designers: DPA
 Lighting Consultants.





↖ ↖ | Interior view, salt water pool
 ↖ | Access to the garden, from the spa building
 ← ← | Interior view, pool hall
 ↑ | Dark stone interior of the relaxation area
 ← | Floor plan spa level